



MAX SWITCHGEARS

MX-CS Series UNITIZED SUB STATIONS



Corporate Office & Factory

MAX SWITCHGEARS PRIVATE LIMITED

NO. 7/174, Vellanaipatti Post, Kalapatti Via, Coimbatore 641048, India.

Mobile: +91 0 9843082837, Fax: 0422 2592795, Email: info@maxswitchgears.com Web: www.maxswitchgears.com



MX-CS Series UNITIZED SUB STATIONS (USS)

MAX USS are available upto 36 KV and 2500 KVA, offers a high tech standard and economy over the years for the switchgear manufacturer with dependability, reliability and versatility.

MAX MX-CS Series Unitized Sub Station is a compact arrangement, which simplifies conventional substation design.

Substation is divided into three compartments

[1] HV Compartment [2] The Transformer Compartment [3] LV Compartment

CHOOSE YOUR CONFIGURATION

MAX MX-CS Series Unitized Sub Station has the following configurable components to choose by the customers.

HV COMPARTMENT	TRANSFORMER COMPARTMENT	LV COMPARTMENT
Extensible & Non Extensible MV Switchgear - Ring Main Unit (RMU) Vacuum / SF6 Circuit Breaker, RMU & HV Fuse RMU and Load Break Switch Protection & Metering Devices Current & Potential Transformer for Metering / Protection	Oil Immersed Transformer Dry Type Transformer (CRT/VPI) ~ Transformer Rating depends on the customer requirement.	LV Distribution Board LT Control Panel with Incomer ACB & Outgoing MCCB APFC Panel with capacitor banks LV Switch fuse Units Instrumentation and Metering Options

SALIENT FEATURES OF MAX MX-CS Series USS

- ✓ Design Conforms to IEC 62271-202, IEC 1330(1995) and IS 14786:2000 Standards.
- ✓ Fully Compartmentalized Design.
- ✓ IP 23/ IP 33 degree of protections available.
- ✓ Designed to withstand electrical impulses, thermal and dynamic stresses.
- ✓ Compact and occupies less floor space.
- ✓ Available in both Indoor and Outdoor Versions.
- ✓ Tailed configuration to meet customer requirements.
- ✓ SCADA Compatible.
- ✓ Adequate Illumination and Safety Switches & Theft proof Designs.
- ✓ Easy to transport, ready to install and operate.
- ✓ Minimal maintenance.



MAIN ADVANTAGES OF OUR USS

- Compact, Safety and Aesthetically superior
- Reduced Electrical losses as USS can be provided near the Load Center
- A High degree of safety and operational reliability is achieved by HT & LT Switchgears and protective relays to avoid overloading
- Reduction in logistic cost as USS is packaged and delivered as one unit
- Low Civil/Foundation Cost
- Minimal installation time

APPLICATIONS

OUR USS are ideally suited indoor as well as outdoor applications and can be placed on Ground, partially or totally below or above ground level.

Mainly used by

- Residential Complexes
- Power Utilities,
- Multiplexes,
- Hotels,
- Hospitals,
- Shopping Malls,
- Software Parks & Airports
- Construction sites
- Exhibitions
- Open cast mines as mobile substation, either on truck or skid mounted

STANDARD VARIANTS

We regularly produce the following standard variants other than the customer specific requirements. Refer the selection table and quote the model for easy communication.

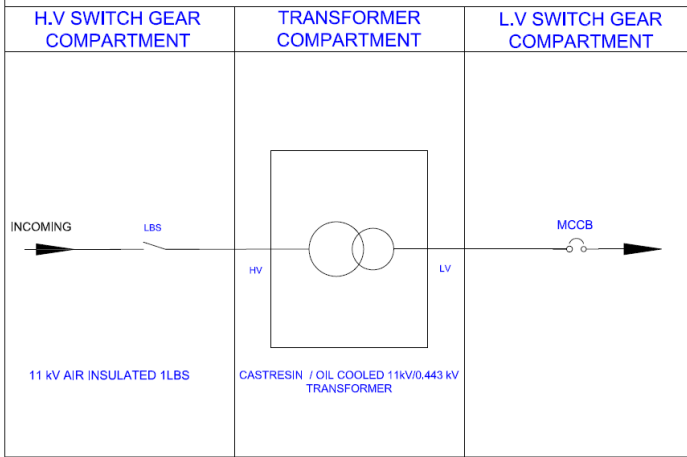
SELECTION TABLE

MODEL	DESCRIPTION
MX-USS-3LBS	USS with 3 LBS, Oil Cooled/Hermetically Sealed XMER / ACB with MCCBs.
MX-USS-2LBS1VCB	USS with 2 LBS 1VCB, Cast Resin XMER / ACB with MCCBs (SF6)
MX-CS-USS-ST1	RMU, TRANSFORMER, ACB WITH MCCB
MX-CS-USS-ST2	RMU, TRANSFORMER, ACB WITH APFC & MCCB
MX-CS-USS-MV1	RMU, MV METERING UNIT, TRANSFORMER, ACB WITH MCCB
MX-CS-USS-MV2	RMU, MV METERING UNIT, TRANSFORMER, ACB WITH APFC & MCCB

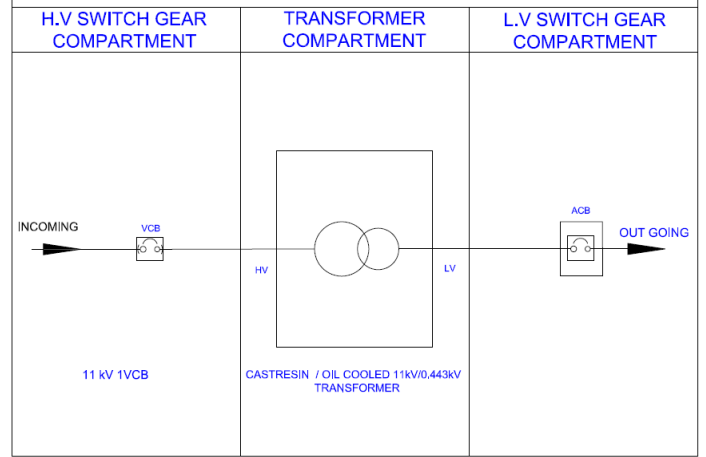


SCHEMATIC DIAGRAM

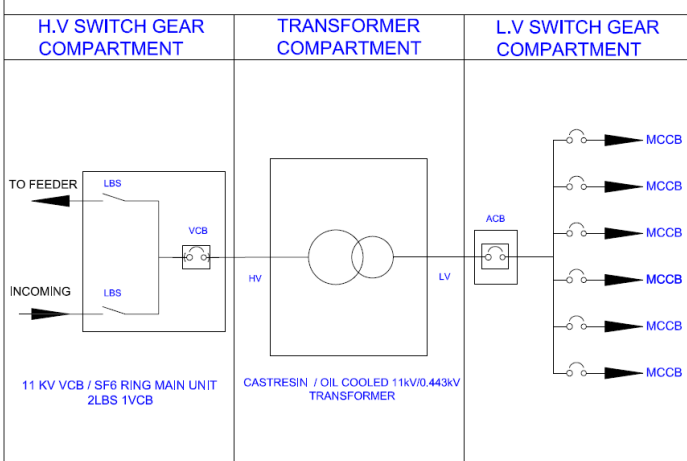
MODEL : MX-USS-1LBS



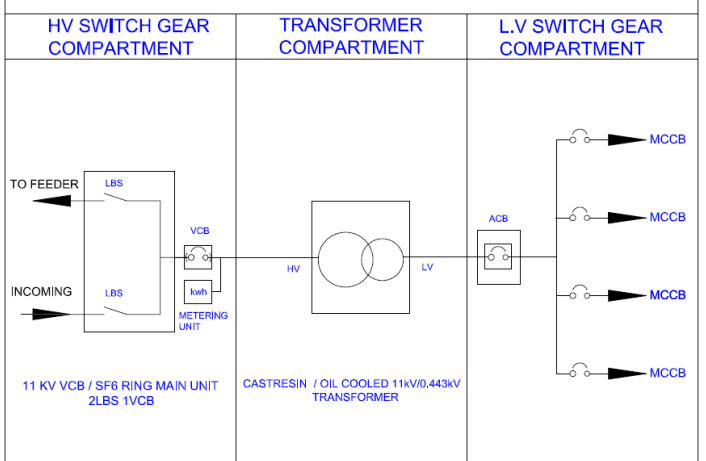
MODEL : MX-USS-1VCB



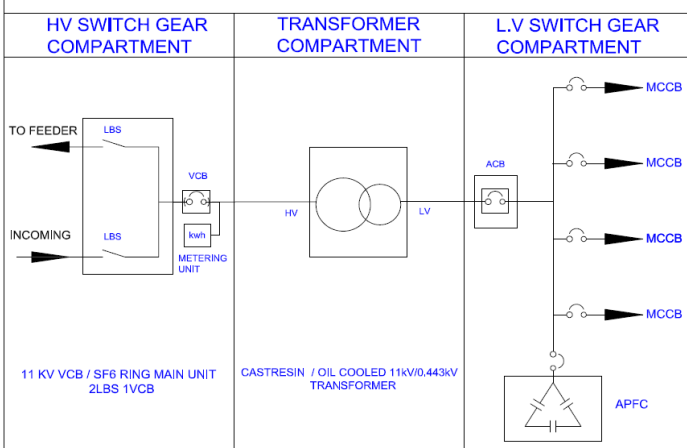
MODEL : MX-USS-2LBS 1VCB



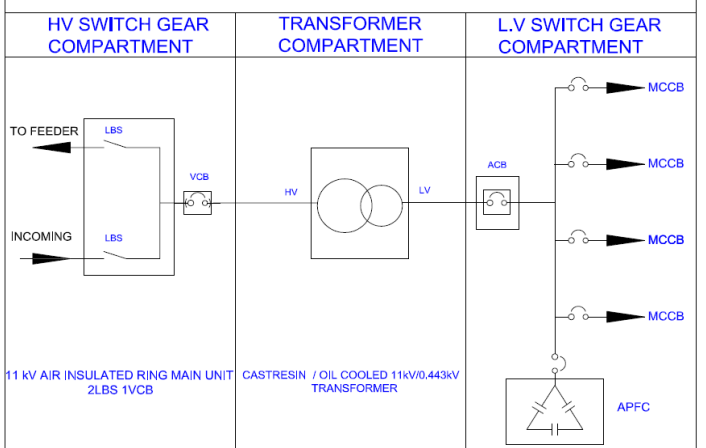
MODEL: MX-CS-USS-MV1



MODEL: MX-CS-USS-MV2



MODEL: MX-CS-USS-ST2





DIMENSIONS

Do you have a car parking, our USS will fit in there!, as the dimensions are depends on configuration, we will share you the details during our detailed technical offer. And do you have space constrains? Contact us we will propose our modified design to suit your requirements.

Here are our standard products and its dimensions

MODEL	DIMENSIONS (in MM) (in L x W x H)
MX-USS-3LBS	3400 x 1900 x 2275
MX-USS-2LBS1VCB	3400 x 1900 x 2275
MX-CS-USS-ST1	3400 x 1900 x 2275
MX-CS-USS-ST2	3550 x 2200 x 2575
MX-CS-USS-MV1	3900 x 2200 x 2575
MX-CS-USS-MV2	3900 x 2200 x 2575

*Dimensions are indicative as they are subject to change based on equipment ratings and layout and due to our design improvements.